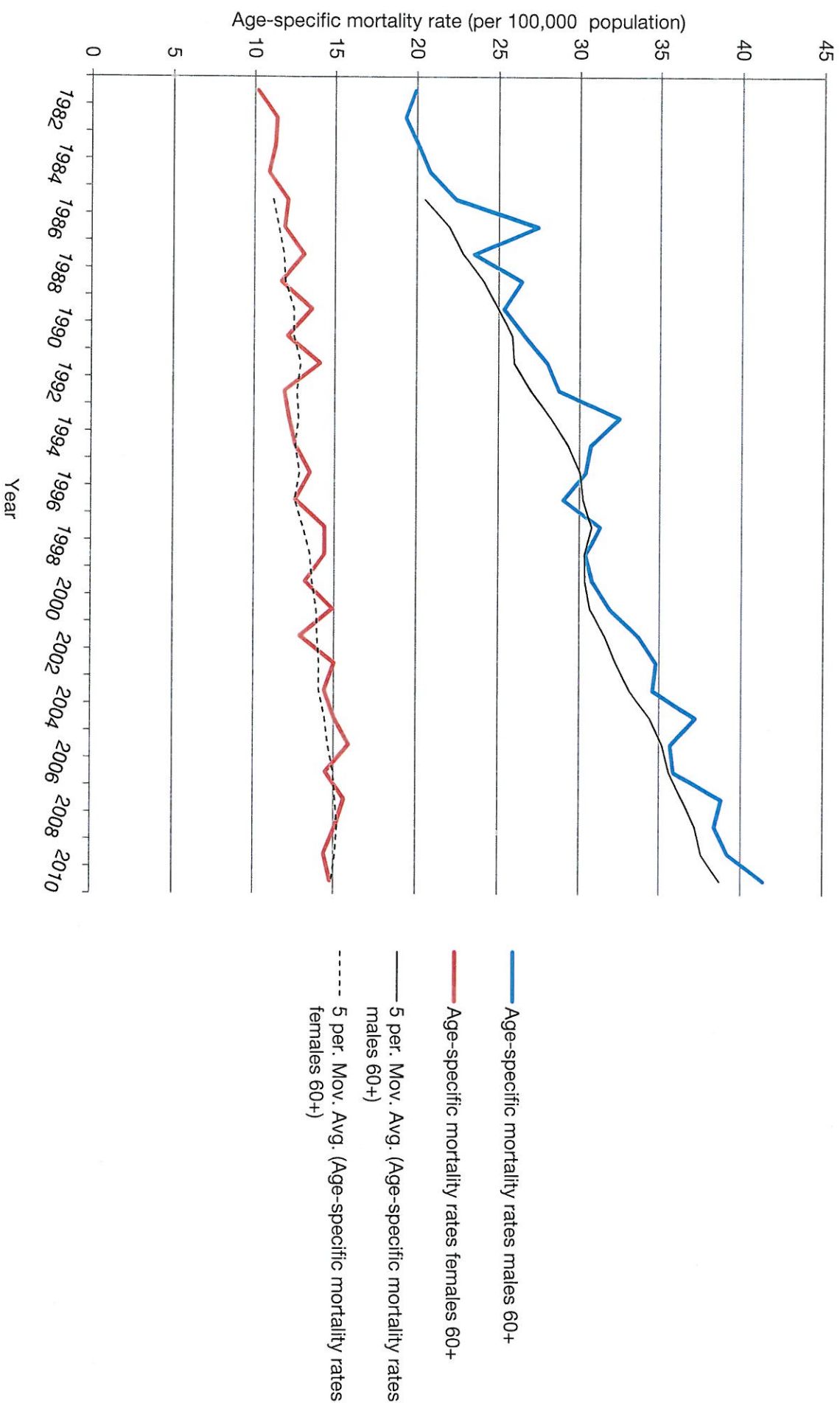
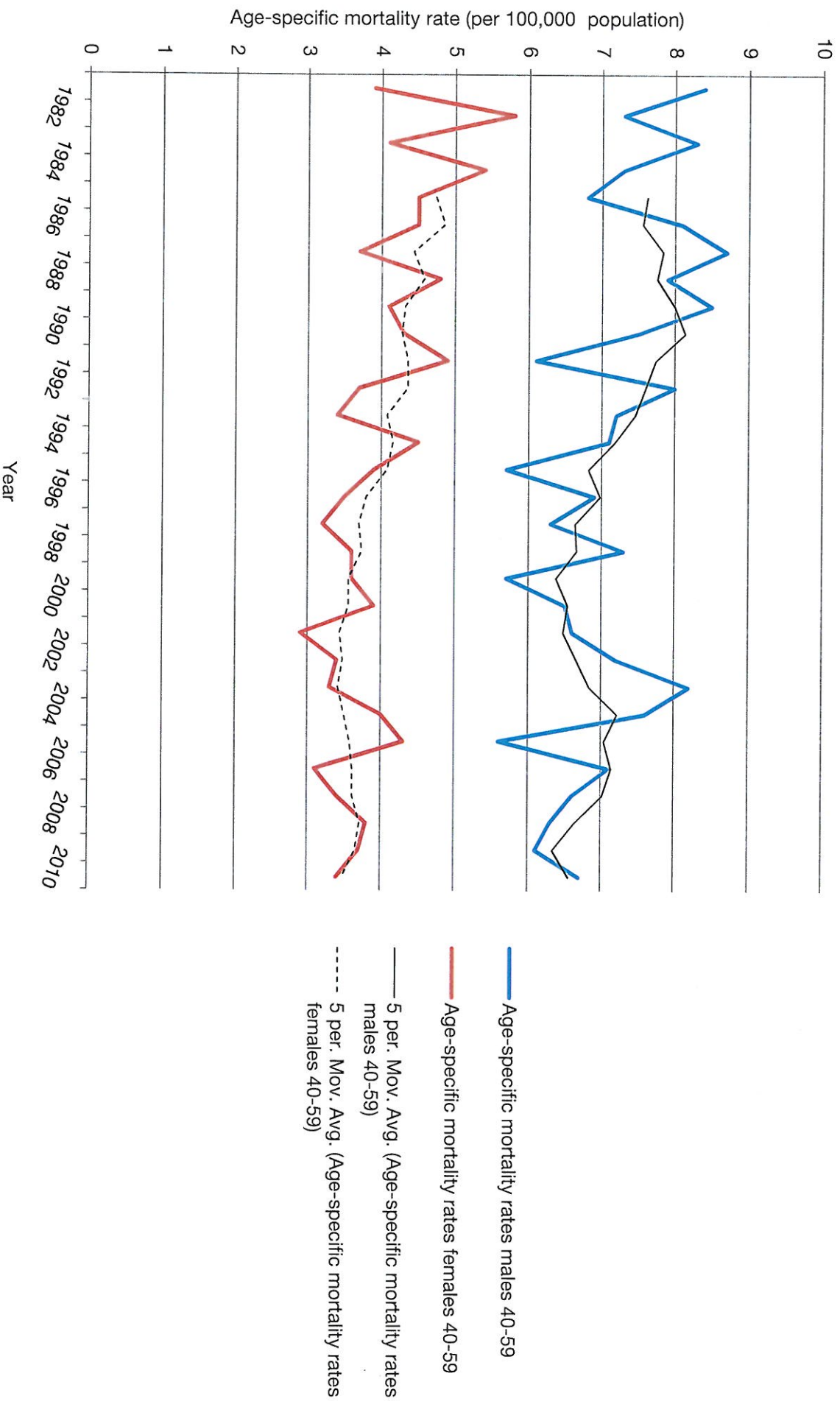


Received 1/5/2014
Terry Stevin

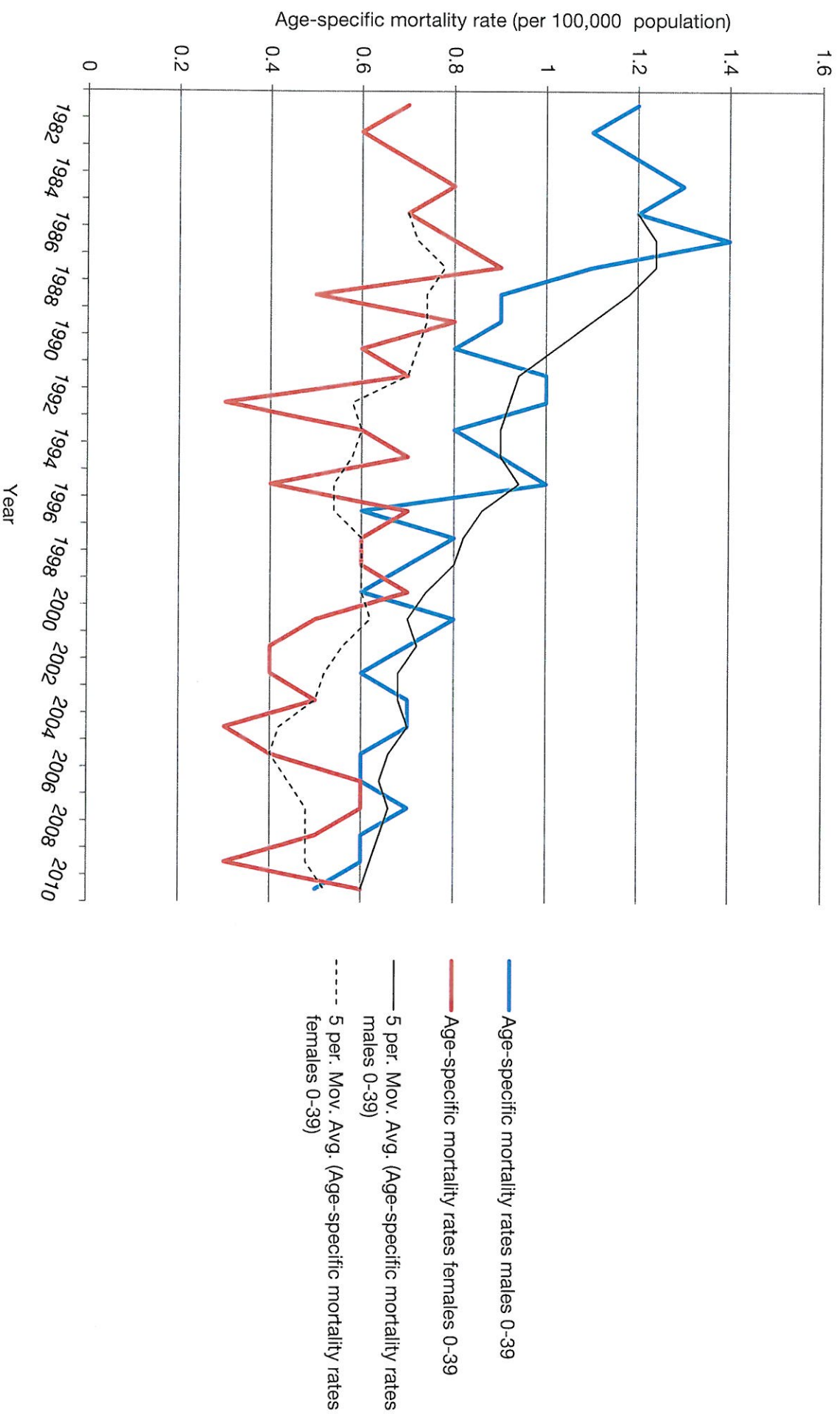
Melanoma age-specific mortality rates in Australia, 1982-2011, 60+ years



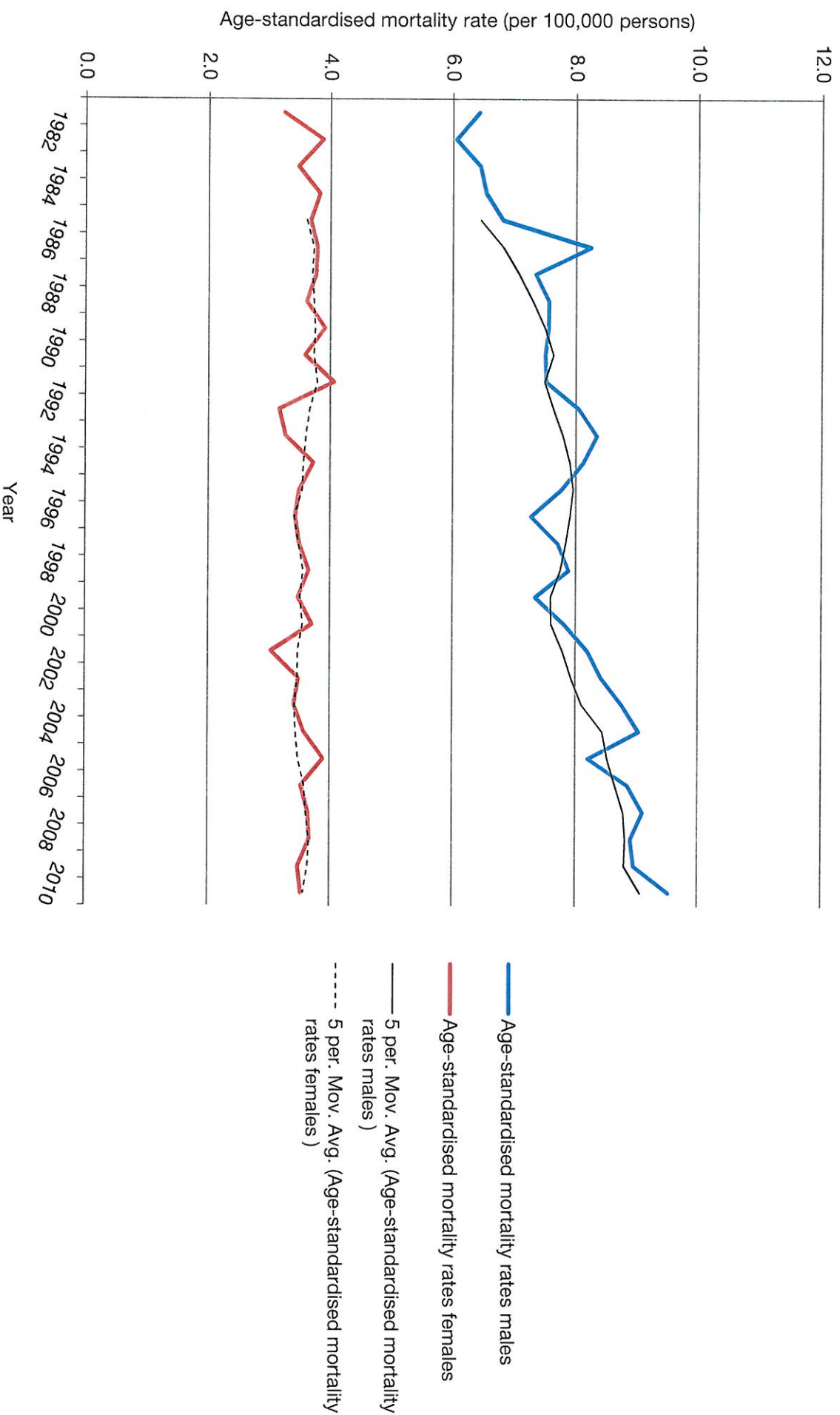
Melanoma age-specific mortality rates in Australia, 1982-2011, 40-59 years



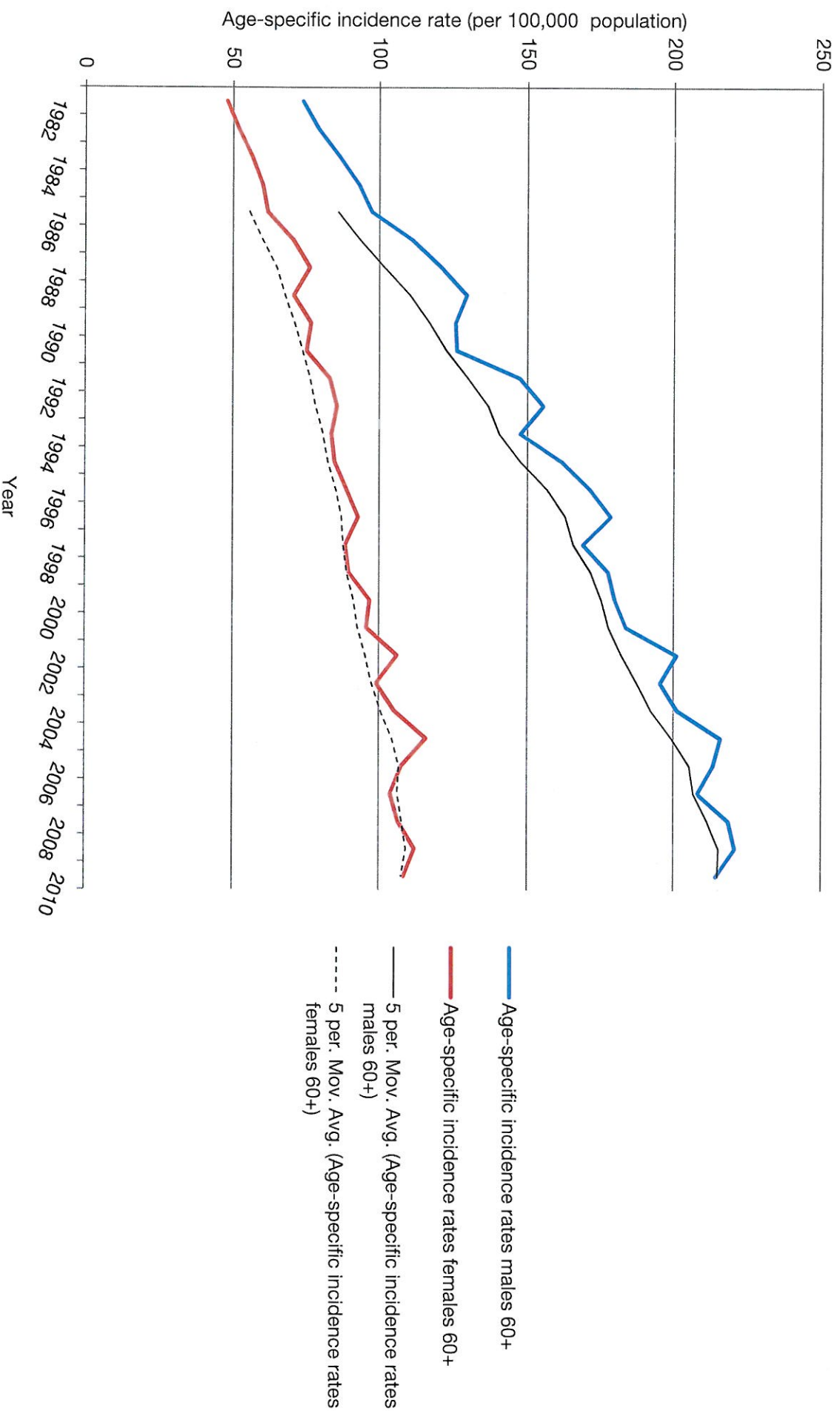
Melanoma age-specific mortality rates in Australia, 1982-2011, 0-39 years



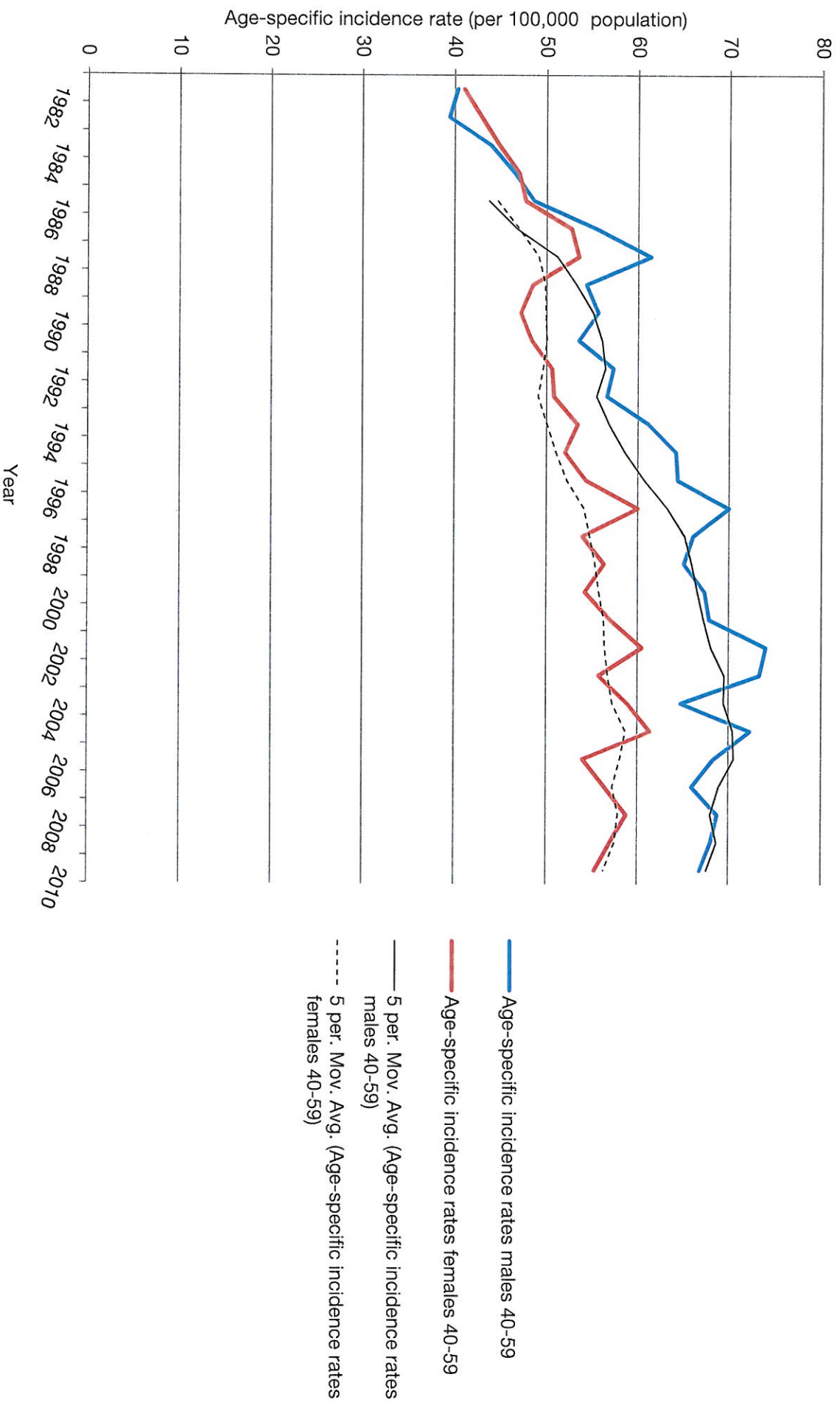
Melanoma age-standardised mortality rates in Australia 1982-2011



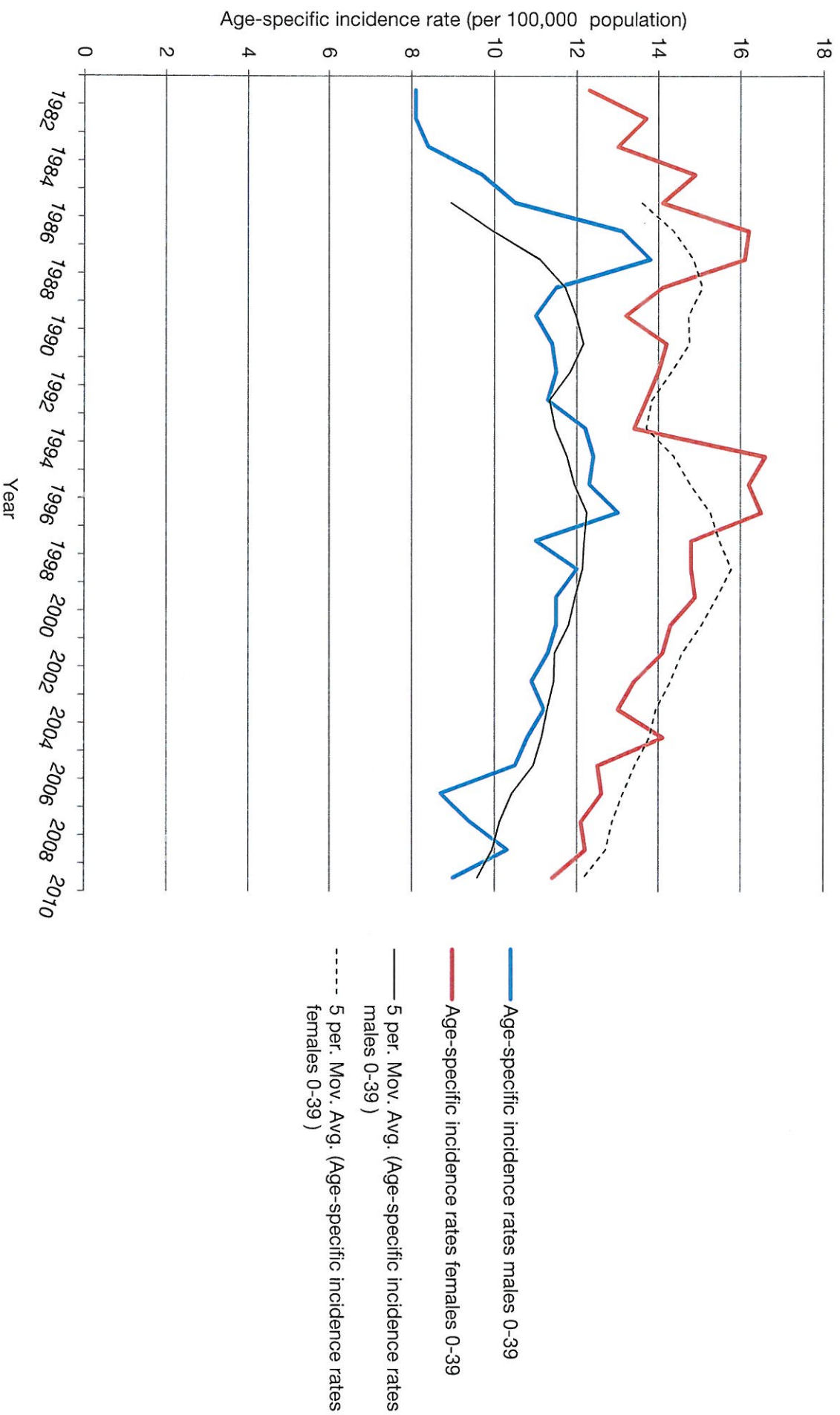
Melanoma age-specific incidence rates in Australia, 1982-2010, 60+ years

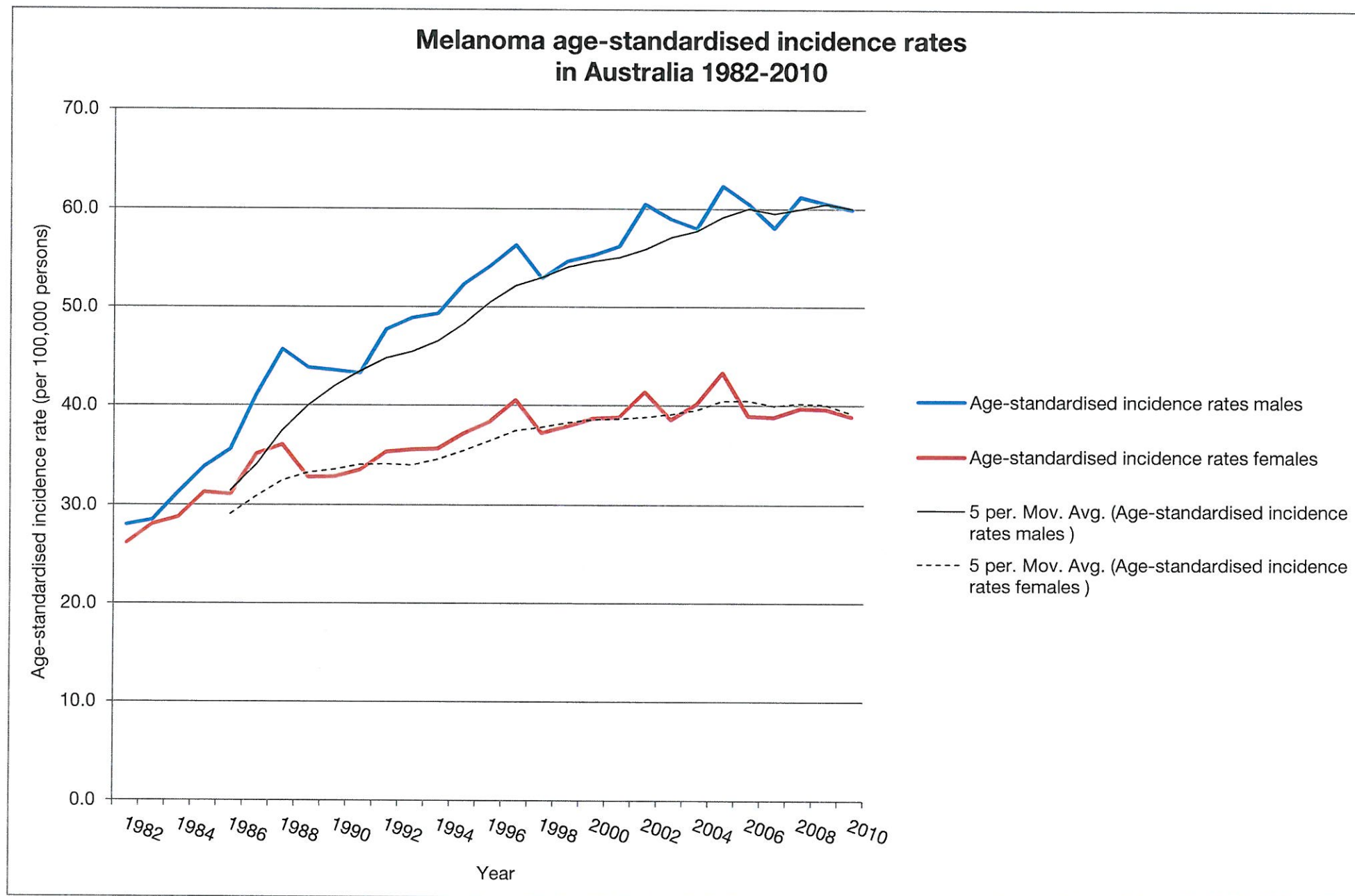


Melanoma age-specific incidence rates in Australia, 1982-2010, 40-59 years

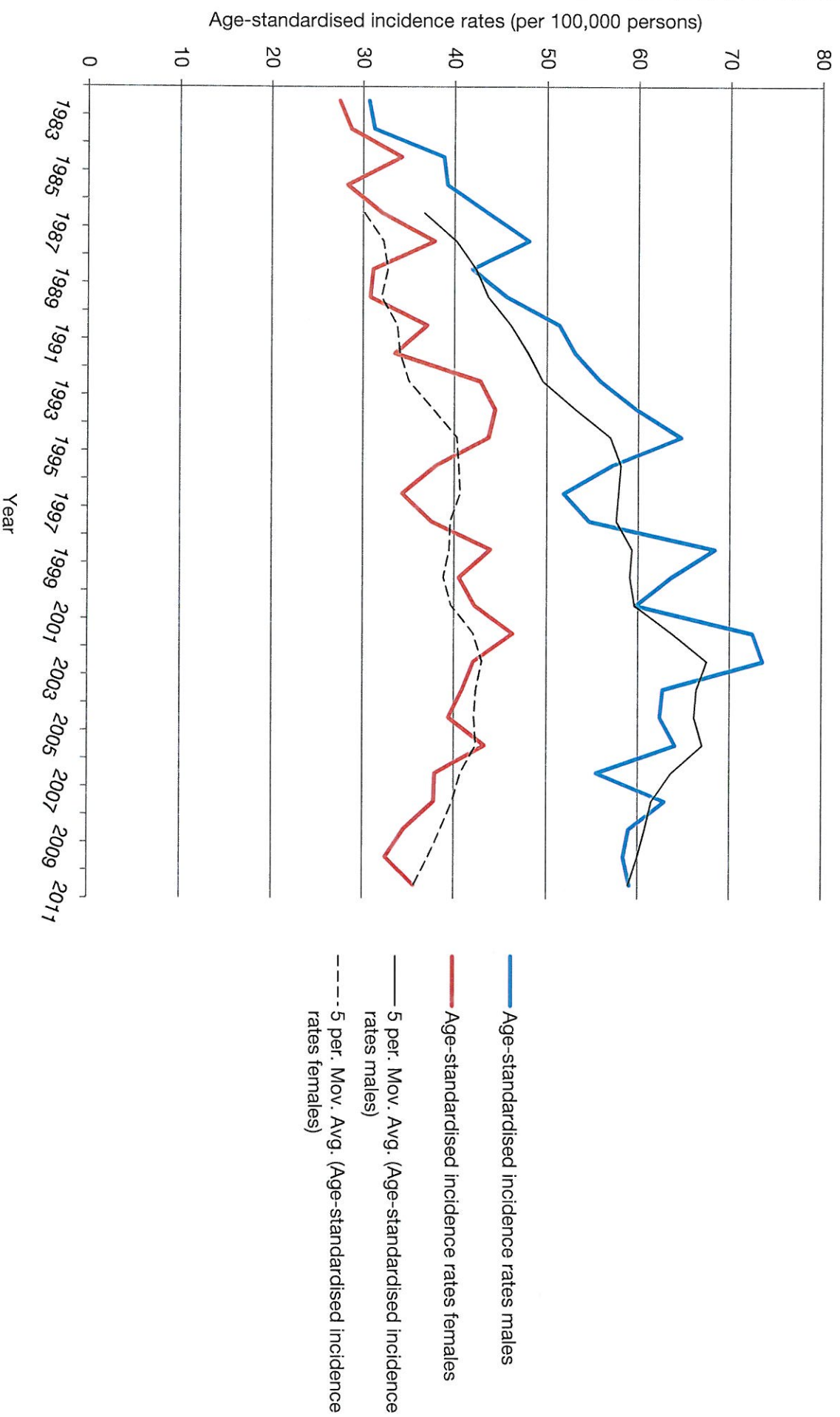


Melanoma age-specific incidence rates in Australia, 1982-2010, 0-39 years

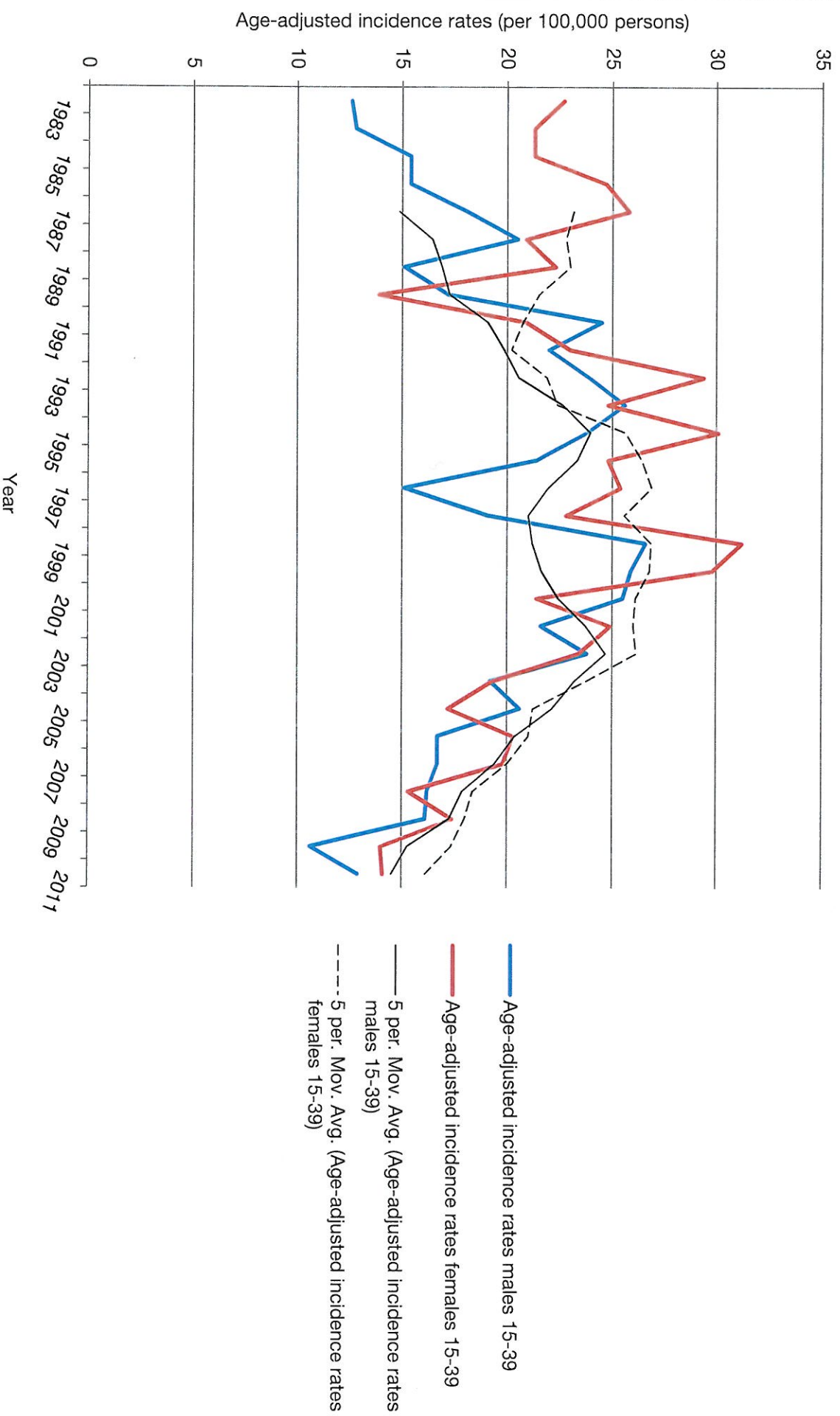




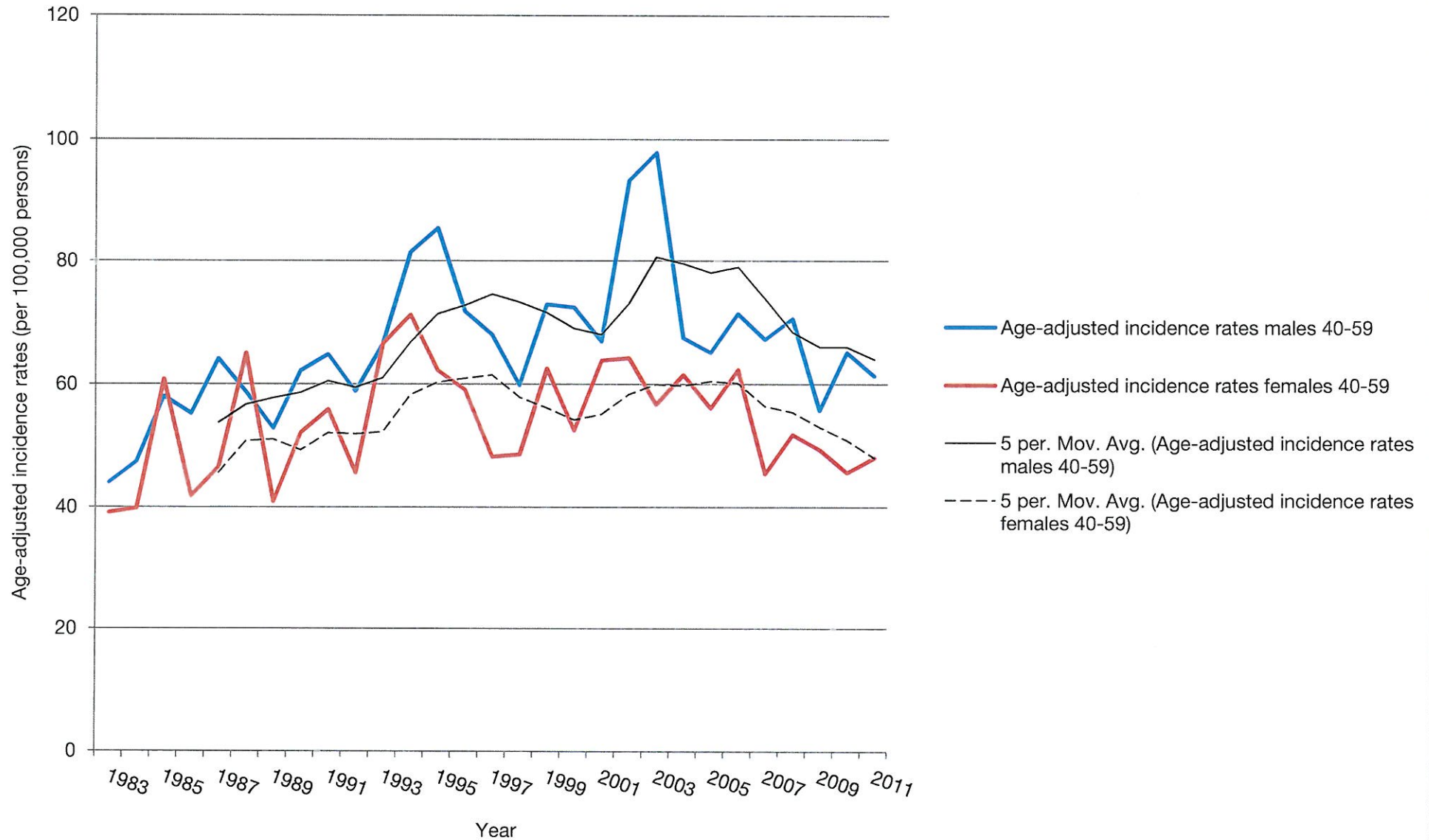
Melanoma age-standardised incidence rates in Western Australia, 1983-2011

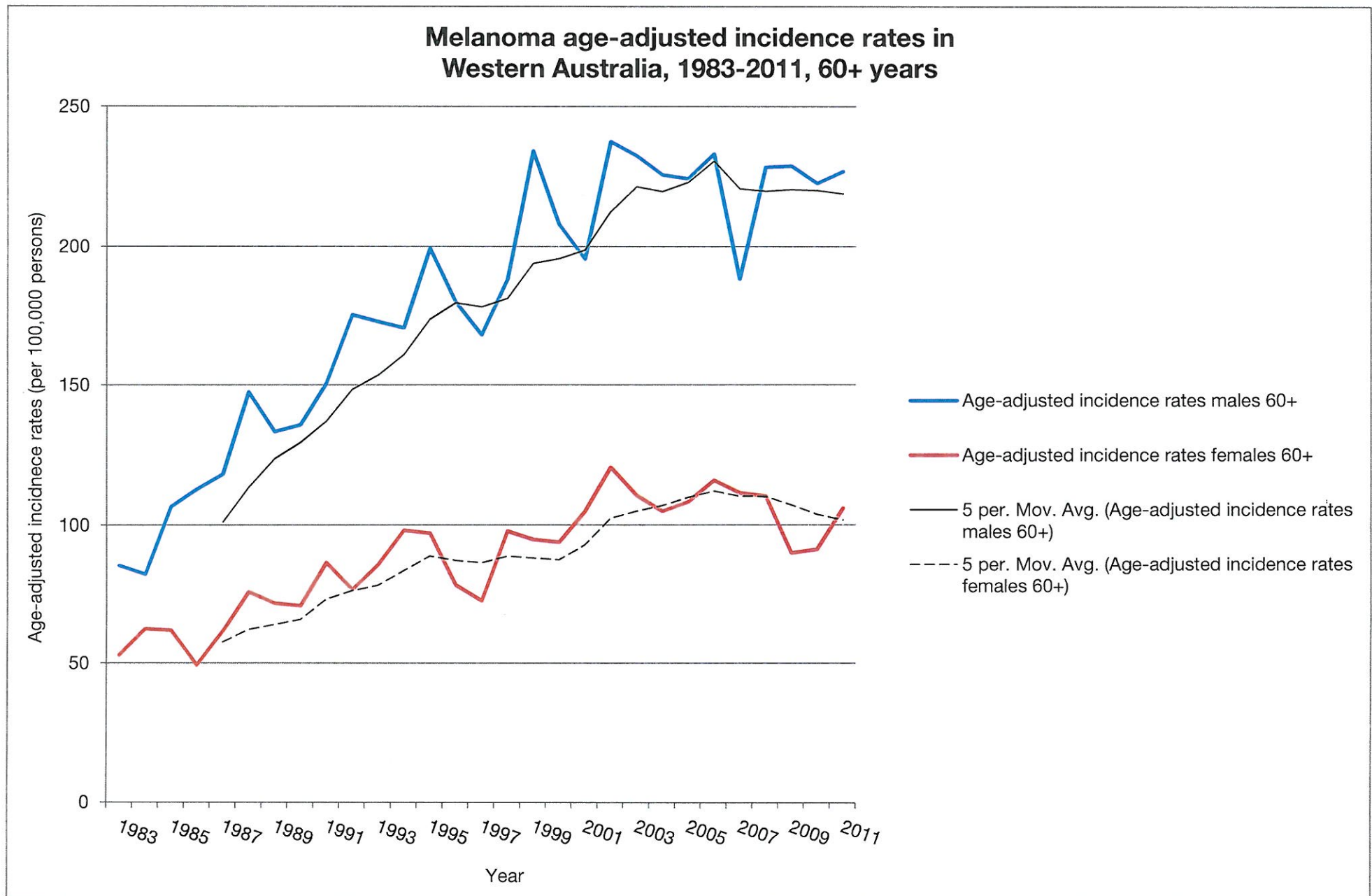


Melanoma age-adjusted incidence rates in Western Australia, 1983-2011, 15-39 years

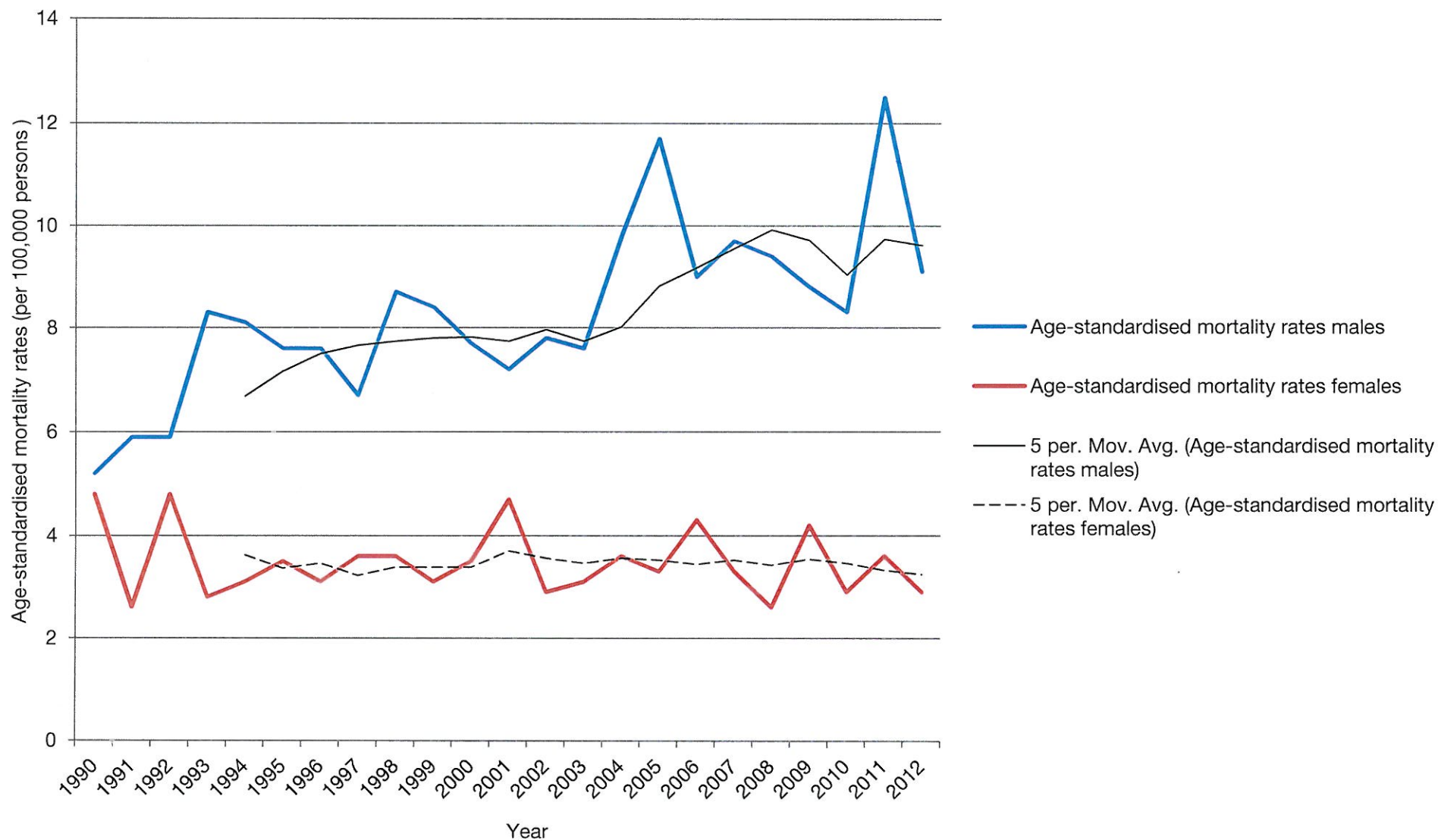


Melanoma age-adjusted incidence rates in Western Australia, 1983-2011, 40-59 years

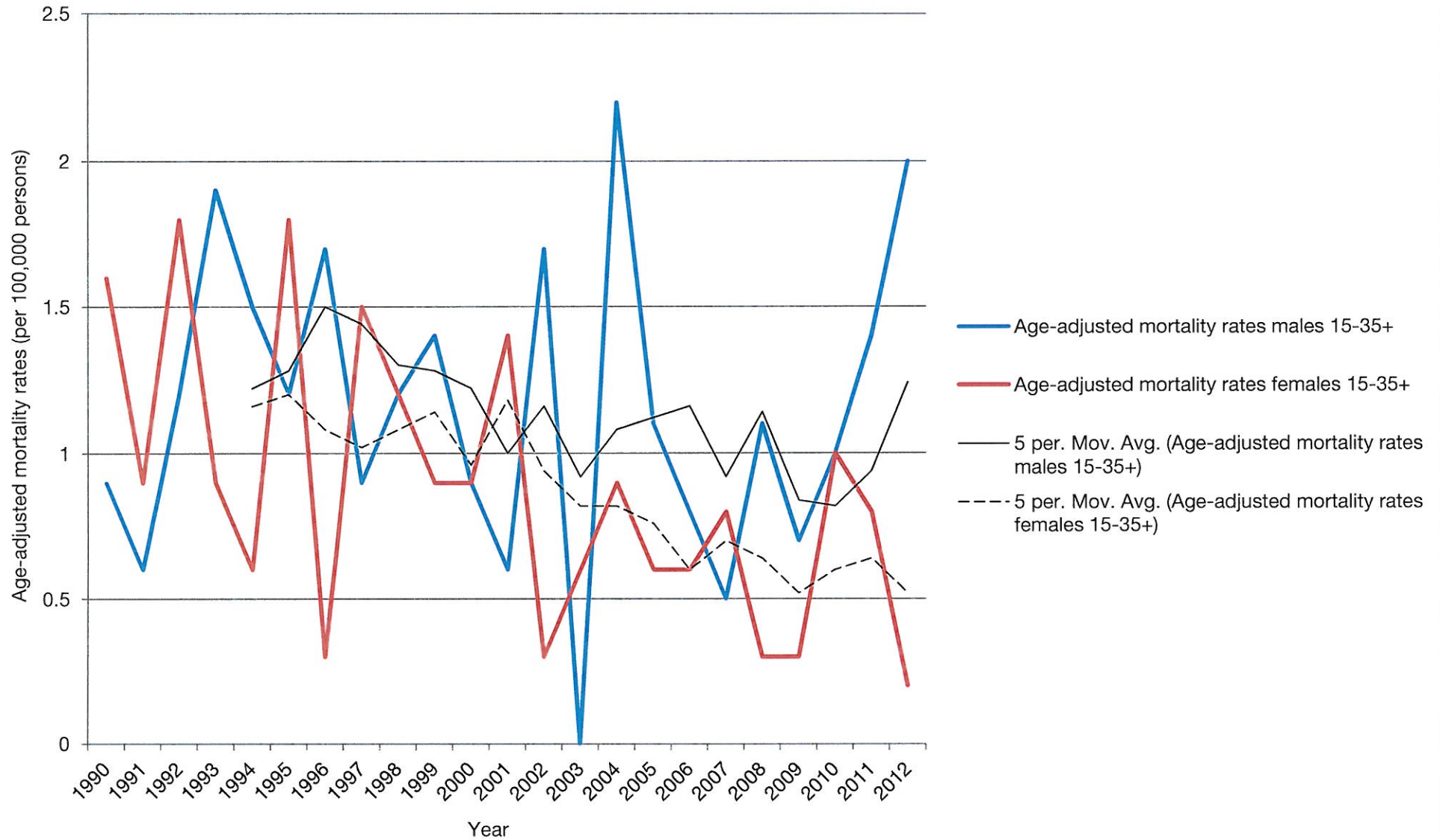




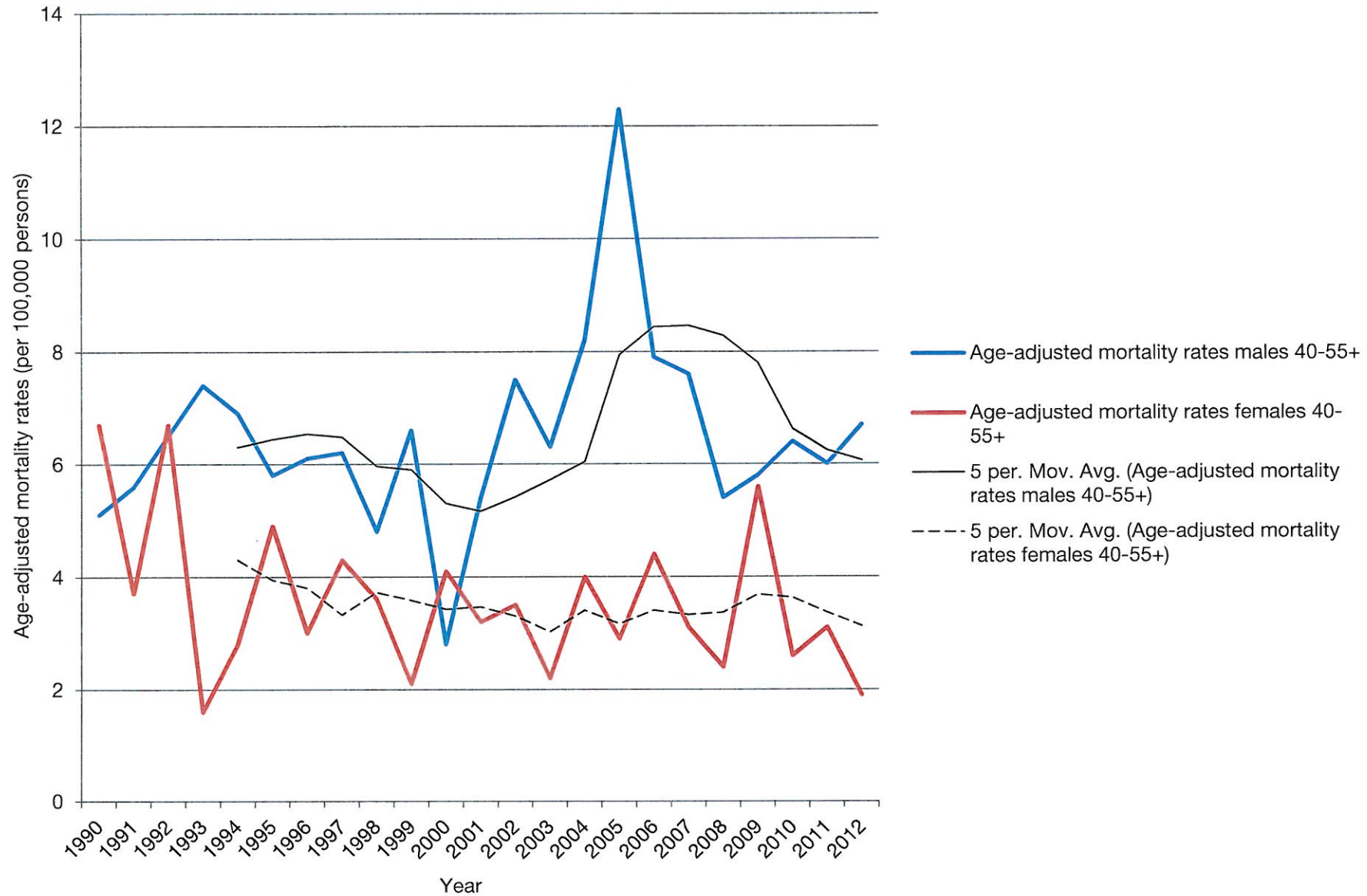
Melanoma age-standardised mortality rates in Western Australia, 1990-2012



Melanoma age-adjusted mortality rates in Western Australia, 1990-2012, 15-35+



Melanoma age-adjusted mortality rates in Western Australia, 1990-2012, 40-55+



Melanoma age-adjusted mortality rates in Western Australia, 1990-2012, 60-85+

